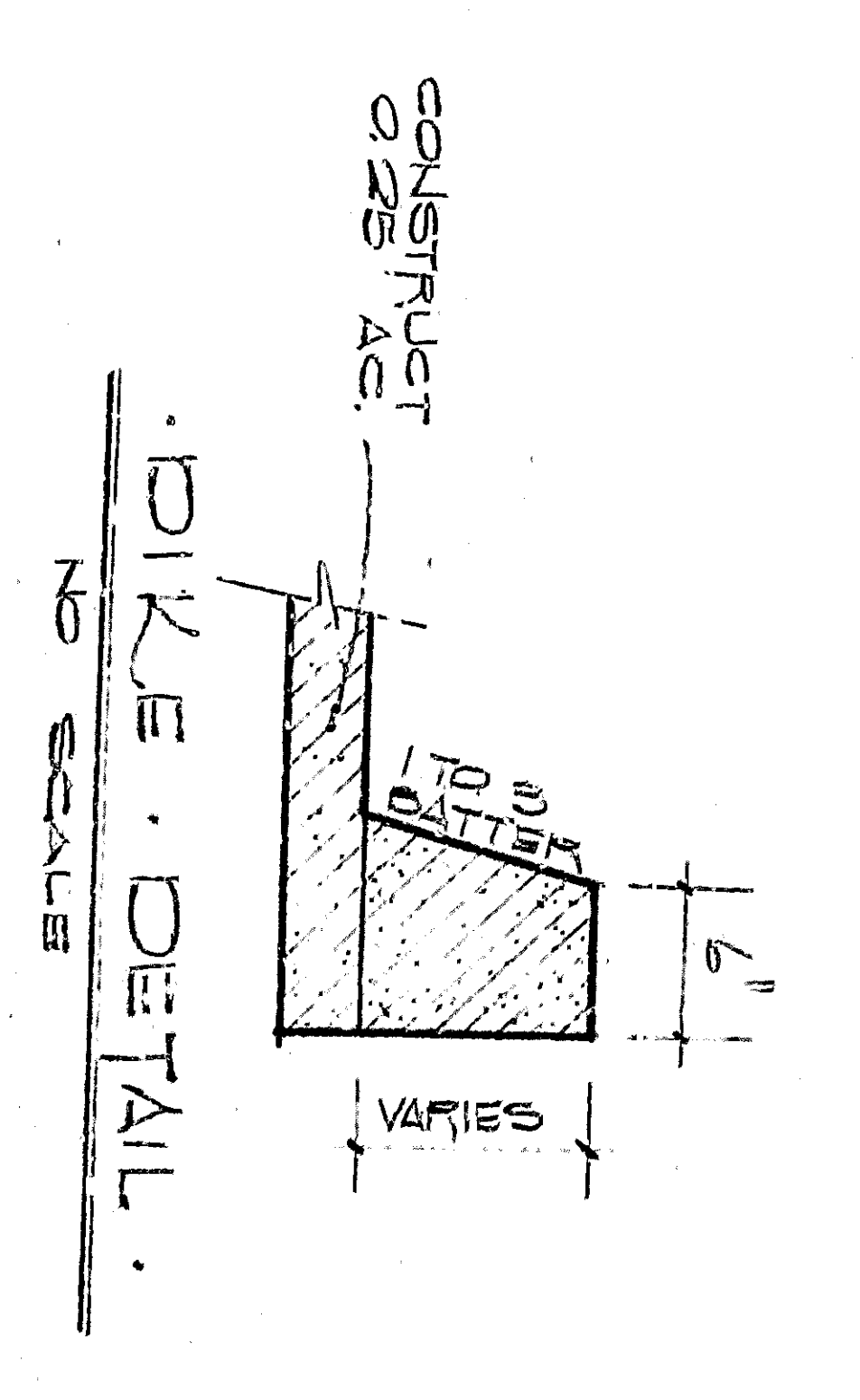
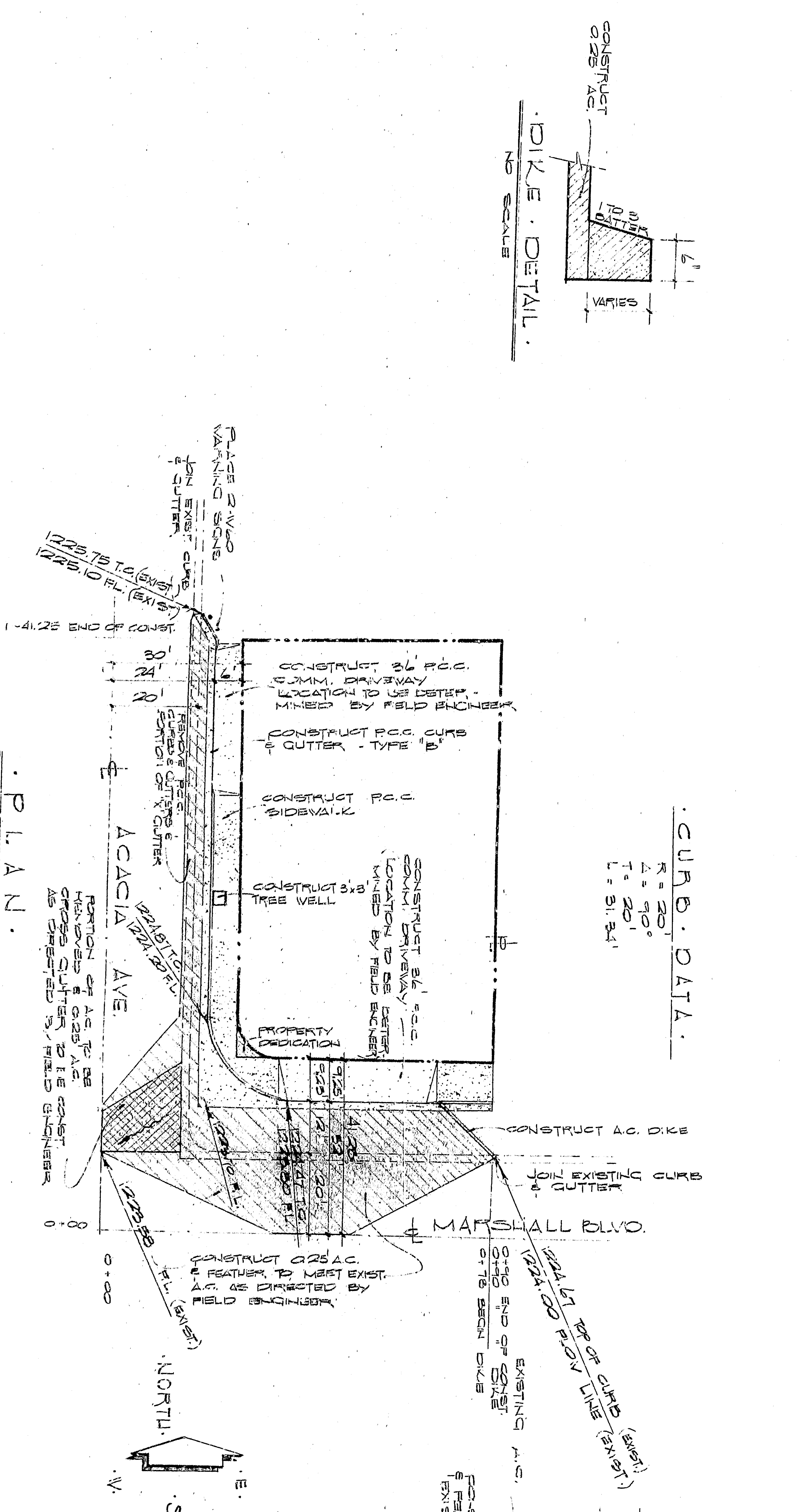


**GENERAL NOTES:**  
 #1 ALL WORK EXHIBITED ON THIS PLAN SHALL BE IN CONFORMANCE WITH APPLICABLE PROVISIONS OF STANDARD SPECIFICATIONS FOR STANDARD SPECIFICATIONS FOR CITY ENGINEERING.  
 #2 BEING IN PART ON THE SOUTHEAST CORNER OF MARSHALL BLVD & ACACIA AVE. 1223.85 N.S.L.

**PROFILE.**  
 SCALE: HORIZ. 1" = 20'  
 VERT. 1" = 4'



**CURB DATA.**  
 R = 20'  
 Δ = 90°  
 L = 20'  
 L = 31.42'

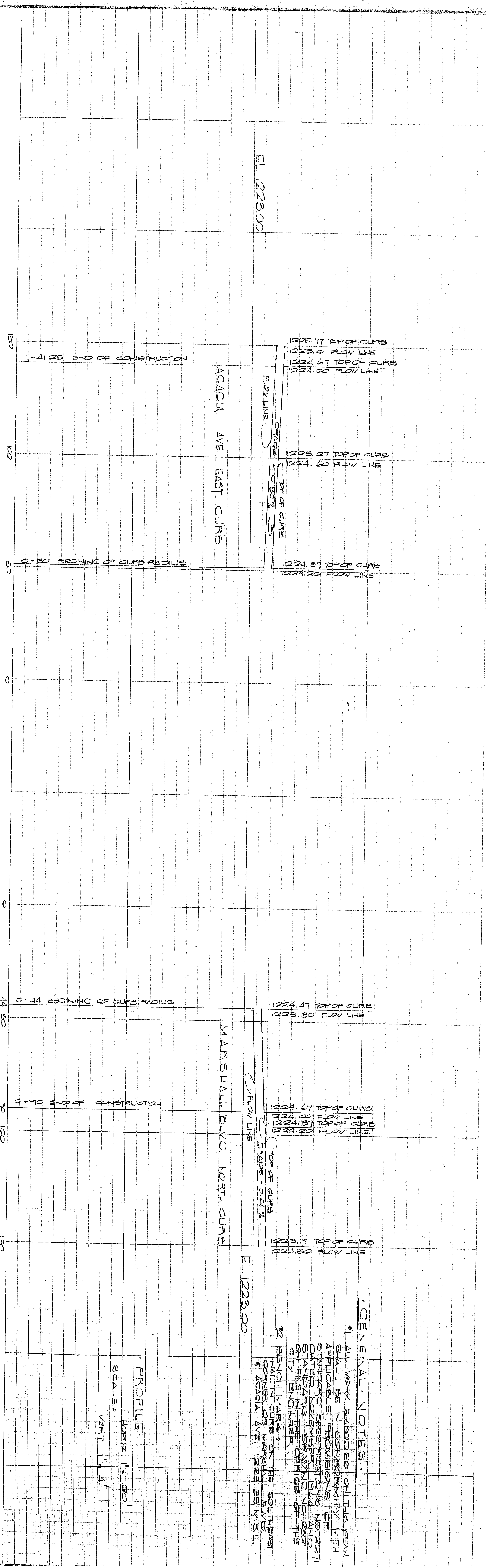


**TYPICAL CROSS SECTIONS.**

SCALE:  
 HORIZ. 1" = 10'  
 VERT. 1" = 1'

APPROVED: [Signature]	CITY ENGINEER
DRAWN BY: [Signature]	CITY ENGINEER
CHECKED BY: [Signature]	CITY ENGINEER
DESIGNED BY: [Signature]	CITY ENGINEER
SHEET NO. 1	TOTAL SHEETS 1

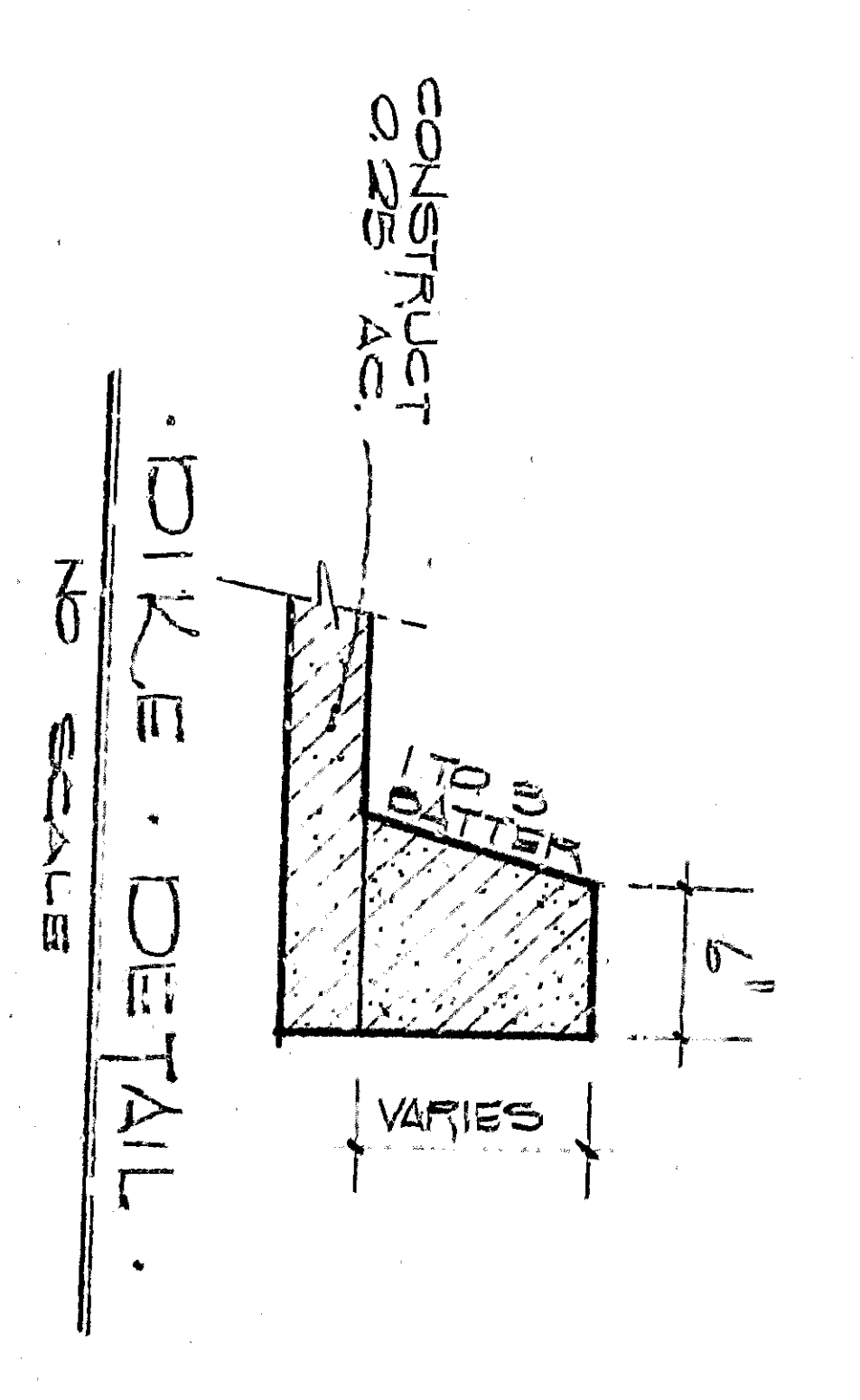
DEPARTMENT OF ENGINEERING  
 CITY OF SAN BERNARDINO  
 IMPROVEMENT PLAN  
 NORTHEAST CORNER OF  
 MARSHALL BLVD & ACACIA AVE



PROFILE  
 SCALE: HORIZ. 1" = 20'  
 VERT. 1" = 4'

GENERAL NOTES:

1. ALL WORK SHOWN ON THIS PLAN SHALL BE IN CONFORMANCE WITH APPLICABLE PROVISIONS OF STANDARD SPECIFICATIONS FOR STANDARD SPECIFICATIONS FOR CITY ENGINEERING.
2. BEING IN LINE WITH THE SOUTHWEST CORNER OF MARSHALL BLVD & ACACIA AVE 1223.85 V.S.L.



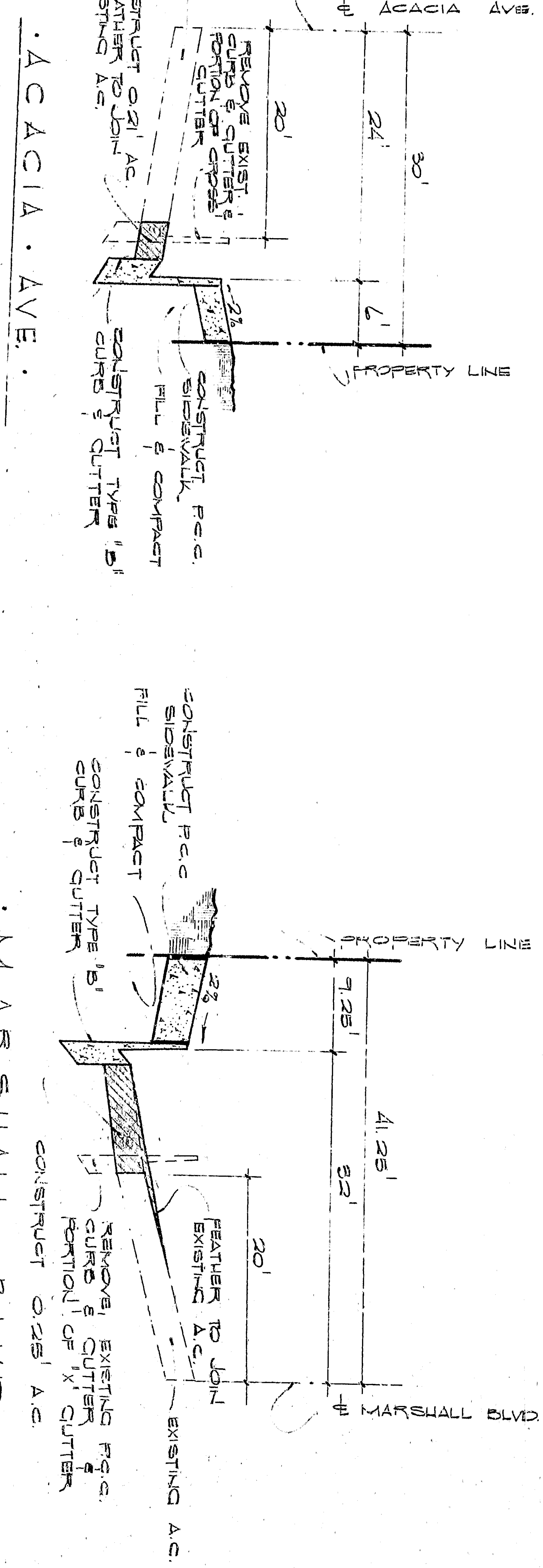
DIKE - DETAIL  
 NO SCALE

CURB DATA:

R = 20'  
 Δ = 90°  
 L = 20'  
 L = 31.84'

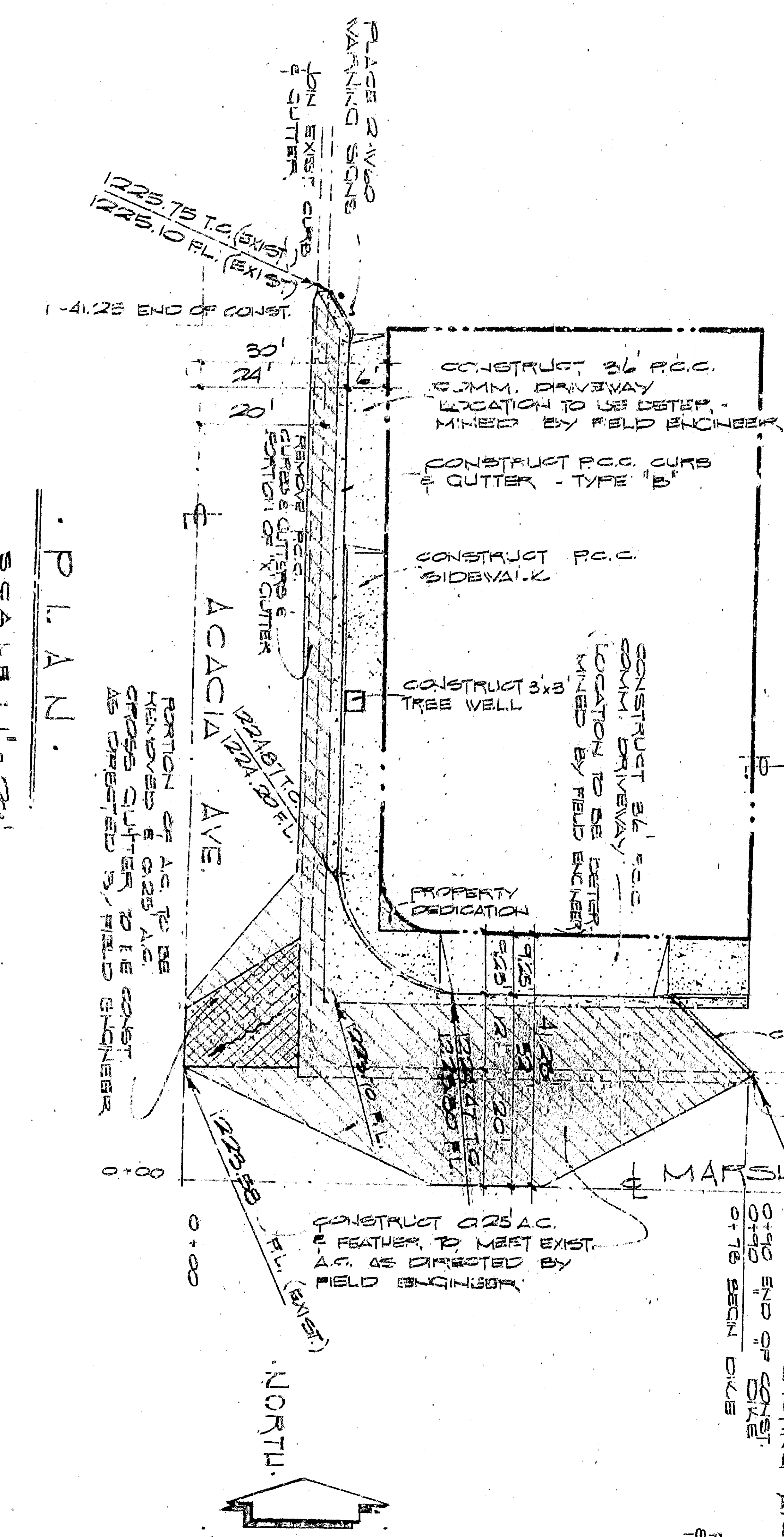
TYPICAL CROSS SECTIONS:

SCALE:  
 HORIZ. 1" = 10'  
 VERT. 1" = 1'



ACACIA AVE.

MARSHALL BVD.



PLAN

SCALE: 1" = 20'

APPROVED: [Signature]	CITY ENGINEER
DRAWN BY: [Signature]	CITY ENGINEER
CHECKED BY: [Signature]	CITY ENGINEER
SHEET NO. 1	TOTAL SHEETS 1
DEPARTMENT OF ENGINEERING CITY OF SAN BERNARDINO IMPROVEMENT PLAN NORTHEAST CORNER OF MARSHALL BLVD & ACACIA AVE	